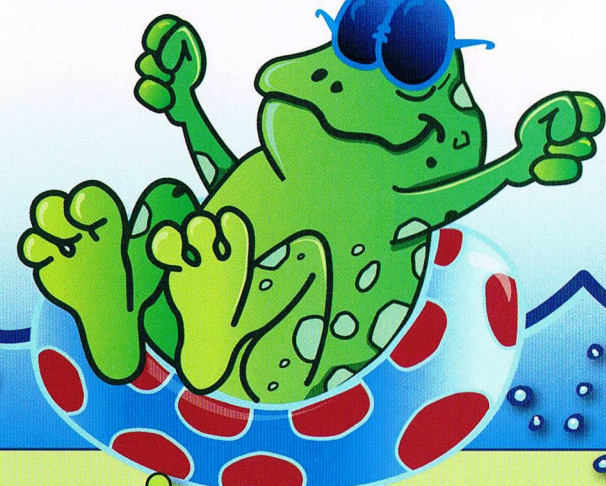


OEM's - microbes that work harder for you

Making filters work more efficiently by utilising microbes that eat organic waste faster while using less oxygen than normal bacteria



coming soon

Microbe Powder

While dormant, Oil Eating Microbes have been placed into a non toxic powder. When this powder is mixed into the water the microbes reactivate to start working immediately.

Water Cleanser Balls

These new small balls fit easily into filters and provide the highest surface area. In pools they allow the Kreepy Krauly to run without having to remove the block. You use half the amount but will have to replace the product every 3 months

do's & don'ts...

- ✓ Quickly wash or soak the blocks in water before use
- ✓ Place the Water Cleanser where the water flows the most
- ✓ If possible place the Water Cleanser in the filter
- ✓ All filter pickups should be no higher than 3cm from bottom of the tank, as the Water Cleanser settles organic waste to the bottom.
- ✓ For best results with external bio filters they should be situated level or below the bottom of the tank.
- ✗ Do Not – leave the Water Cleanser in direct sunlight or under a hot light, as it will melt into a puddle!!
- ✗ Do Not – leave the Water Cleanser floating under a pool cover as it will stick to the cover
- ✗ The Water Cleanser will not give a visual clear effect where there are fertilizers leaching into the water.
- ✗ The Water Cleanser cleans water, it is not a glass cleaner

Filter Systems

✓ Internal Power Filters for Aquariums

These work great with the Water Cleanser. Break up the wax blocks and place them into the bottom sponge compartment below the sponge.

✓ Canister Aquarium Filters

These must be set up under or level with the tank to allow the Water Cleanser to work efficiently. Make sure the water pickup is 3cm from the bottom of the tank.

✓ Pond Sump Sponge Filters

Place the filter at the lowest point in the pond. When cleaning the sponge, if possible wash in a bucket of the pond water and squeeze the waste out. Do not dry the sponge as it is full of good bacteria. The pond will go a little murky after cleaning but will clear again quickly.

✓ Pool Filters

Pool Filters still work with the filter above the height of the pool because they have a small micron in the filter through which the organic waste can't pass.

✗ Hang-On Tank Filter Systems

OEM's settle organic waste to the lowest point, so hang on filters allow the waste back into the tank making it look constantly dirty. Changing this filter to an Internal Power Filter, it will become clean within 6 hours.

✗ No filters or water movement

The Water Cleanser will still work but can take longer for the OEM's to breed in substantial numbers.

OEM's – Oil Eating Microbes are everywhere in many forms. They're usually dormant until a devastating oil spill occurs, then they breed in large numbers and eat the oil to make the environment safe again.

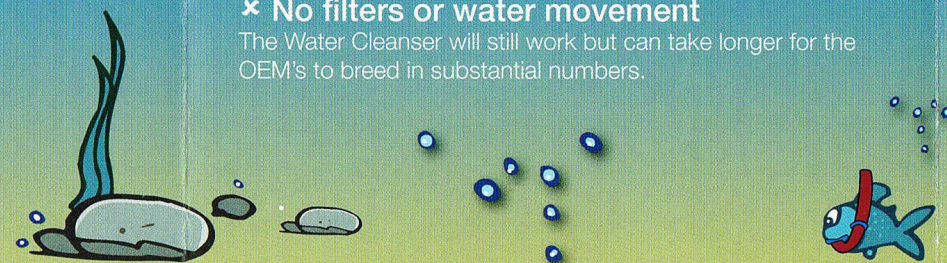
Marine Easy Clean discovered these microbes prefer to eat organic waste (like lollies to a child) and do so more efficiently than any bacteria, but they require hydrocarbons to survive.

The Water Cleanser is a block containing the required hydrocarbons to feed the OEM's, without actually releasing the hydrocarbons into the water. This keeps the microbes healthy enough to do what they do best, eat organic waste.

OEM's also oxygenate the surface soil which is important for keeping toxic deoxygenated soil, which is harmful to plants and animals, from polluting waterways. Tests have shown canals and dams go from smelly, dirty environments with no wildlife, to clean and healthy environments full of frogs, fish and crustaceans. Once OEM's are established they are very easy to maintain in numbers with the Water Cleanser blocks.

- ✓ Less water changes
- ✓ Reduced filter cleaning
- ✓ Healthier water & fish with less infections
- ✓ Surface soil oxygenation
- ✓ More enjoyment and less stress

The Water Cleanser doesn't dissolve as OEM's don't eat wax so once the OEM's have eaten the hydrocarbons from the block you are left with a block of household candle wax which can be disposed of in a responsible manner.



No Fuss. No Mess.

The Water Cleanser brings the enjoyment back into having ponds, water features, aquariums, swimming pools and Dams. Salt or Fresh water.

Where can I use it?

Any water body that needs to be cleaner and healthier. Since it was invented by

Robert Morgan in 2000 we have trialed the product in many ways including aquariums (salt and fresh), ponds, shell hatcheries, pools, canals, sewage systems, farm dams and rain water tanks, all having great results in keeping the water body clean and healthy with an increase in aquatic life.

How does it control algae?

The Water Cleanser does not kill algae; Water bound algae requires sun and a food source, usually the result of the breakdown of organic matter. The Water Cleanser speeds up this break down process; it no longer produces a food source for the algae to feed on.

✓ Swimming Pools

Organic waste in pools causes fouling which is typically treated with quantities of chemicals dependent on the amount of waste. The Water Cleanser controls organic waste therefore reducing the requirement for large amounts of chemicals, "stabilizing" the water, and making cleaning the pool easier.

✓ Ponds & Aquariums

Organic waste in tanks causes fouling and toxins which are typically treated with biological filters. The Water Cleanser works by putting superior bacteria into the existing filter system making it work more effectively and in turn helping to reduce nitrites and nitrates to maintain phosphate levels.

✓ Dams

Organic waste in dams causes fouling and toxic algal blooms. The Water Cleanser clears the water by settling organic matter and reoxygenating the soil to help reduce the algal blooms.

Directions

Place or float the Water Cleanser block in an area where the water flow is strongest, for pools, that's the skimmer box.

The following size chart is a guide only. More Water cleanser is required in systems with high organic waste levels.

Standard Usage

| | |
|------|---------------|
| 90g | up to 200L |
| 200g | up to 2,000L |
| 400g | up to 5,000L |
| 1kg | up to 10,000L |

In Pond or Aquarium Filter

| | |
|------|---------------|
| 90g | up to 1,000L |
| 200g | up to 4,000L |
| 400g | up to 10,000L |
| 1kg | up to 30,000L |

In a Swimming Pool

| | |
|--------|----------------|
| 1/2 kg | up to 60,000L |
| 1kg | up to 120,000L |

SIZE CHART

the Water Cleanser

by Marine Easy Clean

100% Australian made & Owned

APVMA - This product does not require registration under the Agricultural and Veterinarian Chemical Codes act (2099/2011)

Patent Application PCT/AU2008/000606

the Water Cleanser

Chemically Free, Environmentally Friendly
Water Treatment Solution

by Marine Easy Clean

CRYSTAL CLEAR WATER

- ✓ Ponds & Water Features
- ✓ Fish Tanks & Aquariums
- ✓ Swimming Pools

No Fuss, No Mess

even frog friendly

