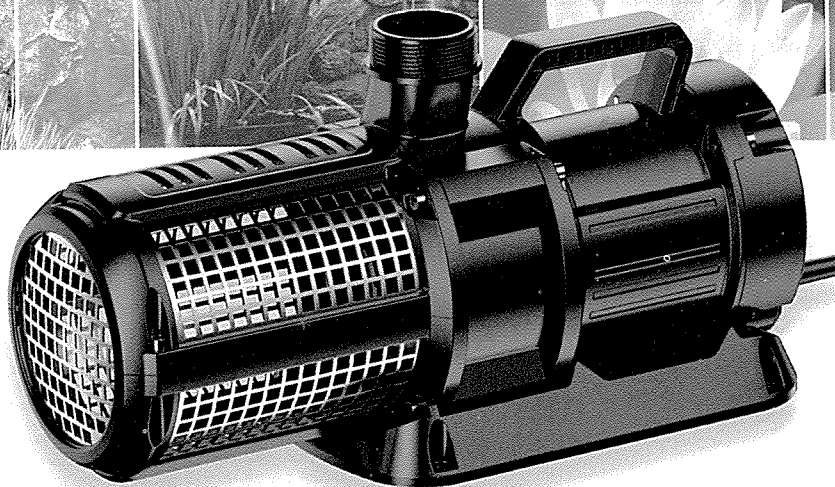


# **PondMAX**

FOR GARDENS THAT GO THE EXTRA YARD

## **PX SERIES HIGH FLOW FILTER PUMP**

INSTRUCTION MANUAL



DATE  
MAY 2025

[www.pondmax.com.au](http://www.pondmax.com.au)

MODEL  
PX26000  
PX32000



WELCOME TO THE WORLD OF **PONDMAX™**.  
YOU MADE THE RIGHT CHOICE INVESTING IN THIS  
QUALITY PRODUCT. **THANK YOU AND ENJOY.**

#### TECHNICAL SPECIFICATIONS

DESCRIPTION	PX26000	PX32000
MAXIMUM WATER FLOW (L/H)	26000	28000
MAXIMUM HEAD (m)	9.5	11
POWER CONSUMPTION* (W)	330	450
VOLTS (V) AC	220 - 240	220 - 240
IP RATING	IPX8	IPX8
FREQUENCY (Hz)	50	50
CABLE LENGTH (m)	10	10
RECOMMENDED TUBING SIZE (inch / mm)	2 / 50	2 / 50
PRODUCT ORDER CODE	02PX026	02PX032

\* SUBJECT TO VARIATION ACCORDING TO LOAD.

# PX SERIES HIGH FLOW FILTER PUMPS

## DESIGN HIGHLIGHTS

The PondMAX High Flow Filter Pumps have been manufactured with advanced technology to provide you with the best quality pumps for your pond. Visit our website to view our range of pond filtration, outdoor/ underwater lighting, water treatments and general accessories.

- Anti-burnout technology with automatic idling protection and blocking protection
- Robust stainless steel prefilter cage with 6mm handling capacity
- Ideal of use in ponds and rocky waterfalls
- Ceramic shaft for good wear resistance and long service time.



## IMPORTANT SAFEGUARDS

Please read the operating instructions and familiarise yourself with the equipment before placing it in service. Correct and safe use of the system requires strict compliance with the safety instructions.

For safety reasons persons with reduced physical, sensory or mental capabilities and people that are not familiar with these instructions should not use this equipment. Children are to be supervised and not play with the appliance.

- Any damage to the equipment or unmerited operation will bring dangers to the surrounding precincts. So if there is any damage of the equipment, it must not be used. The equipment should be placed out of reach of children.
- For your own safety, disconnect from the power supply before any maintenance of any equipment is attempted on the tank or water body. Always unplug the pump from the power supply when not in use
- Never pull the cable to disconnect the plug from the power supply - Grasp the plug and pull to disconnect. If required, have a qualified electrician install a weatherproof power supply point near to the pond or water-feature (within the cable length of the appliance).
- Be sure the equipment is submerged completely in the water. The depth should not be greater than 2m.
- Do not operate the pump if the appliance or any components of the system, such as the power cable, have been damaged. Check appliance for defects regularly.
- Always use a properly grounded power supply that is connected to an RCD with a rated residual operating current not exceeding 30mA. As per AS/NZS 3350.2.41:1997
- To avoid an electric shock, do not attach the plug to the power supply socket with wet hands. On installation, the drip loop method should be used to prevent water from traveling down the cable and onto the plug or power supply. If the plug does get wet, do not unplug the cable. Immediately disconnect the circuit breaker that supplies power to the power supply point. Then unplug and examine the plug, and power supply point, for presence of water. If the power point has become wet, you should consult an electrician before using the power point again.
- Do not cut the cable as this will result in voiding your warranty.
- Do not install or store the appliance where it will be exposed to extreme hot or cold temperatures. Do not use in water above 40°C.
- Care should be taken to arrange the power cable so that it cannot be accidentally tripped over or pulled.
- Do not attempt to repair the electrical appliance yourself. Return to an authorised service centre or place of purchase if a fault occurs, (regular maintenance is not considered repair and is required by user).

FOR GARDENS THAT GO THE EXTRA YARD



## BEFORE OPERATION

- The pump must be supplied through a residual current device (RCD) having a rated residual operating current not exceeding 30mA.
- Do not lift, lower, or carry the pump by the cable.
- Always switch off the mains before doing any maintenance or placing your hand in the water to which this pump is connected.
- Do not add any lubricant for the appliance, do not operate the pump without water. It will damage the pump
- Do not use in water which temperature are higher than 40°C as it remarkably shortens the life of the pump.

---

## INSTALLATION

Installation when used inside water:

- The pump must be immersed in water completely. The minimum depth is 20cm
- Ideally do not place the pump directly on the pond floor, place it on a raised surface to avoid blockages

---

## MAINTENANCE

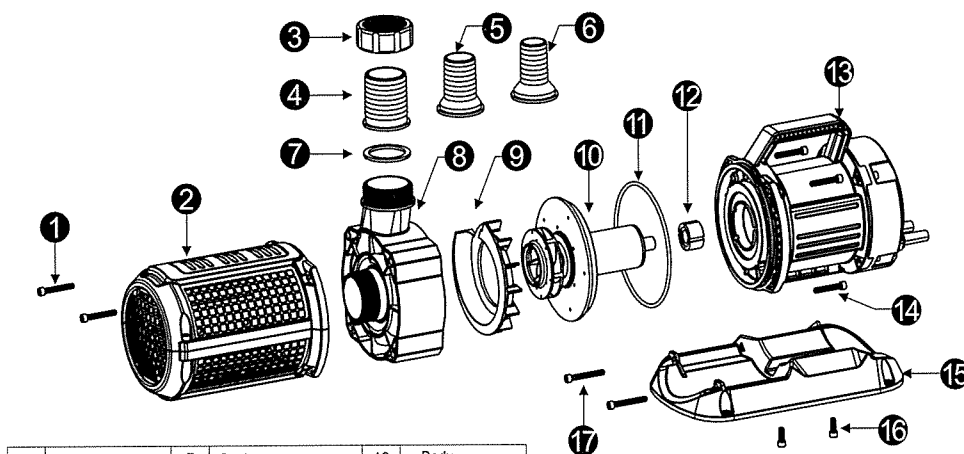
Periodic maintenance is essential for the long service life of this pump, failing to regularly maintain this pump can affect the pumps normal function and damage the pump. Ensure you turn off the power supply when maintaining. The motor unit is hermetically sealed by quality resin & as such does not require any other care. Disassemble steps are as follows:

1. Use an Allen Key to screw off the four screws on the filter baskets and two screws on the base plate, take off the filter basket and base plate.
2. Use an Allen Key to screw off the four screws on the impellor changer and remove the impellor chamber
3. Take out the impellor, clean and replace it. Repeat these steps in reverse to put back together.

If the pump is not in use for a long period of time, take the pump out of the water, clear it out of dirty water and leave in a cool dry place.

# PX SERIES HIGH FLOW FILTER PUMPS

## EXPLODED VIEW



1	Screw M6x40	7	Gasket	13	Body
2	Filter basket	8	Impeller chamber	14	Screw M6x35
3	Outlet nut	9	Vice impeller chamber	15	Base plate
4	Outlet 1	10	Rotor	16	Screw M6x16
5	Outlet 2	11	O-ring	17	Screw M6x45
6	Outlet 3	12	Bearing		



### IMPORTANT

These accessories and attachments are recommended for use with your PondMAX product specified in this manual. The use of any other accessories or attachments might present a risk of injury to persons. Only use the accessory or attachment for its stated purpose.

## TROUBLESHOOTING

PROBLEM	REASON	SOLUTION
Pump is not working	Pump is not flowing	Ensure the power is turned on
	Impeller jamming	Remove foreign matter from impeller
	Incorrect Voltage applied	Ensure correct voltage is applied
	The water inlet or outlet pipe is clogged with debris	Remove debris from the pipes
Pump is noisy	Impeller worn out	Replace it with a new impeller
	Water level has dropped and the pump is exposed	Ensure pump is submersed
	Hose is too long or clogged with debris	Shorten the hose and/or clean inside of hose
	There is air in the impeller chamber (only when used outside water)	Remove air, put the pump into the water. Turn the switch to "ON" then "OFF" intermittently 2-3 times

FOR GARDENS THAT GO THE EXTRA YARD



## LIMITED WARRANTY

This product comes with a warranty against defects and motor failure (Warranty). The benefits provided in this Warranty are in addition to other rights and remedies available to you under the Australia Consumer Law. The Warranty is provided to the original purchaser of the product on the following terms:

- The Warranty is given by Aquatec Equipment Pty Ltd trading as Aquatec Equipment.  
- Tel 08 6260 1000 or email [sales@pondmax.com.au](mailto:sales@pondmax.com.au)
- To make a claim under the Warranty you must return the faulty product to the place of purchase with a valid receipt or proof of purchase.
- A Warranty claim must be made within 2 years of the date of purchase. If you have registered your product you will get an extra year warranty (2+1 years warranty)
- If your claim complies with the above terms and the product is not an exhaustible item and no voiding events have occurred, we will (at our sole discretion):
  - repair the product, if possible; or
  - provide a replacement product; or
  - if a replacement product is not available, provide a refund for the purchase price paid.
- You will bear the cost associated with claiming under the Warranty such as the cost of transportation and delivery of the product to and from the place of purchase.
- The product contains a complete Impellor Set. These items are exhaustible (Exhaustible Items) and are not covered under the Warranty.
- The Warranty will be void if any of the following events occur, as determined by us, at our sole discretion (Voiding Events):
  - any tampering/removal of warranty/identification labels or electrical components is evident;
  - the defect has arisen due to: an accident, incorrect or inadequate installation, misuse or abuse of the product (including improper maintenance and service), excessive wear and tear, not following manufacturer's guidelines/ instructions, or the product has been used in a manner contrary to the purpose or suitability of the product;
  - the product has been modified without our authority;
  - the defect is caused by power surges/spikes brownouts.
- Loss of livestock, damage to property or personal injury caused by the improper use or abuse of the product will not be covered and the manufacturer excludes all liability for such events, to the extent permitted by law.
- In addition to the Warranty set out above, our goods come with guarantees that cannot be excluded under the Australian Consumer Law. You are entitled to a replacement or refund for a major failure and for compensation for any other reasonably foreseeable loss or damage. You are also entitled to have the goods repaired or replaced if the goods fail to be of acceptable quality and the failure does not amount to a major failure.

**Please consult your retailer for quality original PondMAX replacement parts.  
Visit [www.pondmax.com.au](http://www.pondmax.com.au) for your nearest stockists.**

**E.&O.E.**

**PONDMAX.COM.AU**